

Orders issued to
The Armed
Trawlers
based in Granton

Patrols to guard the
German ships
while anchored in the
Firth of Forth

21st November 1918



Armed Drawler Patrol to Guard German ships while
Anchored in the Firth of Forth

From... The Admiral, Second-in-Command, Grand Fleet

Date... 20th November 1918

To... The Officers Commanding No. 10 Drawler Squadron

Object of Patrol

A. To prevent all boats which are not manned by naval personnel approaching the German ships from the westward nearer than a distance of half a mile

B. To stop any German boats that may attempt to leave their ships

2 Force Employed

Armed Drawler No 3574 Thomas Whipple (Senior Officer)
3542 George Bligh
3575 George Westphall
3696 Joseph Connell
3832 John Johnson
3675 Edward Collingwood

3 General Information

(C) A plan of the anchorage is attached.*

* Supplied to Armed Drawlers only

(D) On arrival at the anchorage a preliminary examination of the German ships will be carried out by parties from the guarding ships & Destroyers, and a more detailed inspection will be made on Friday, 22nd November

(E) During the dark hours each ship of the guarding force on the columns adjacent to the German ships will keep two searchlights ready for instant use, and also two secondary armament guns - 8 Destroyers of the Destroyer's guarding force will have steam at instant readiness

Each German ship has been ordered to hoist three white lights at the stern & two at the stem, and to illuminate the upper Deck with coaling lights

(F) No guns have been ...

----- CONFIDENTIAL -----

Armed Trawler Patrol to Guard German ships while
Anchored in the Firth of Forth

From. . . The Admiral second-in-command Grand Fleet

Date . . . 20th November 1918

To The Officers commanding H.M. Harbour command

Object of Patrol

A. To prevent all boats which are not manned by naval personnel approaching the German ships from the westward nearer than a distance of half a mile.

B. To stop any German boats that may attempt to leave their ships.

2. Force Employed

Armed Trawler	No 3574	Thomas Whipple (Senior Officer)
	3542	George Bligh
	3575	George Westphall
	3696	Joseph Connell
	3832	John Johnson
	3673	Edward Collingwood

3. General Information

(C) A plan of the anchorage is attached *

* Supplied to armed trawlers only

(D) On arrival at the anchorage a preliminary examination of the German ships will be carried out by parties from the guarding ships & Destroyers, and a more detailed inspection will be made on Friday 22nd November.

(E) During the dark hours each ship of the guarding force on the columns adjacent to the German ships will keep two searchlights ready for instant use and also two secondary armament guns - 8 Destroyers of the Destroyers' guarding force will have steam at instant readiness

Each German ship has been ordered to hoist three white lights at the stem and two at the stern, and to illuminate the upper deck with coaling lights.

(4) Orders for Armed Trawler Patrol

(G) Two trawlers are to patrol continuously the western approach to lines A to E, and two armed trawlers are to patrol the western approach to lines F & L.

The remaining two armed trawlers are to anchor as convenient under the lee of Inchekeith and keep steam at half an hour's notice.

The senior officer of the trawler patrol is to arrange reliefs as convenient.

(H) The trawlers on patrol are to cruise continuously at slow speed, at a distance of not more than about 2 cables from the western lines of heavy ships and destroyers respectively. Navigation lights are to be shown during the dark hours.

(I) Boats from No. W. ships only are to be permitted to approach the German ships.

(J) If any German boat attempts to leave a German ship she is to be stopped & towed alongside No. W. S. Revenge.

(5) Communications

If it is necessary for any trawlers on patrol to communicate with No. W. S. Revenge one of the following methods should be adopted.

(X) Detach one trawler to close "Revenge".

(Y) Communicate through No. W. S. Blonde, in the case of trawlers patrolling the northern anchorage.

(Z) Communicate through the westernmost Destroyer of the 11th Destroyer Flotilla in the case of the southern anchorage.

NOTE:- The procedure outlined in (X) is desirable if long signals are involved.

(K) Trawlers anchored under the lee of Inchekeith are to keep a look-out on Inchekeith Signal Station.

(6) General

In the event of bad weather, the trawlers employed on patrol duties may be required to transport the searching parties mentioned in paragraph 3 (D), in which case special instructions will be issued.

G. C. Madden
Admiral

(4) Orders for Armed Trawler Patrols

(G) Two trawlers are to patrol continuously the western approach to lines A to E, and two armed trawlers are to patrol the Western approach to lines F to L.

The remaining two armed trawlers are to anchor as convenient under the lee of Inchkeith and keep steam at half an hours' notice.

The Senior Officer of the trawler patrol is to arrange reliefs as convenient.

(H) The trawlers on patrol are to cruise continuously at slow speed, at a distance of not more than about 2 cables from the Western lines of heavy ships and Destroyers respectively. Navigation lights are to be shown during the dark hours.

(I) Boats from H. M. Ships only are to be permitted to approach the German ships.

(J) If any German boat attempts to leave a German ships she is to be stopped & towed alongside H.M.S. Revenge.

(5) Communications

If it is necessary for any trawlers on patrol to communicate with H.M.S. Revenge one of the following methods should be adopted

(X) Detach one trawler to close "Revenge"

(Y) Communicate through H.M.S. Blonde, in the case of trawlers patrolling the northern anchorage.

(Z) Communicate through the westernmost Destroyer of the 11th Destroyer Flotilla in the case of the Southern anchorage

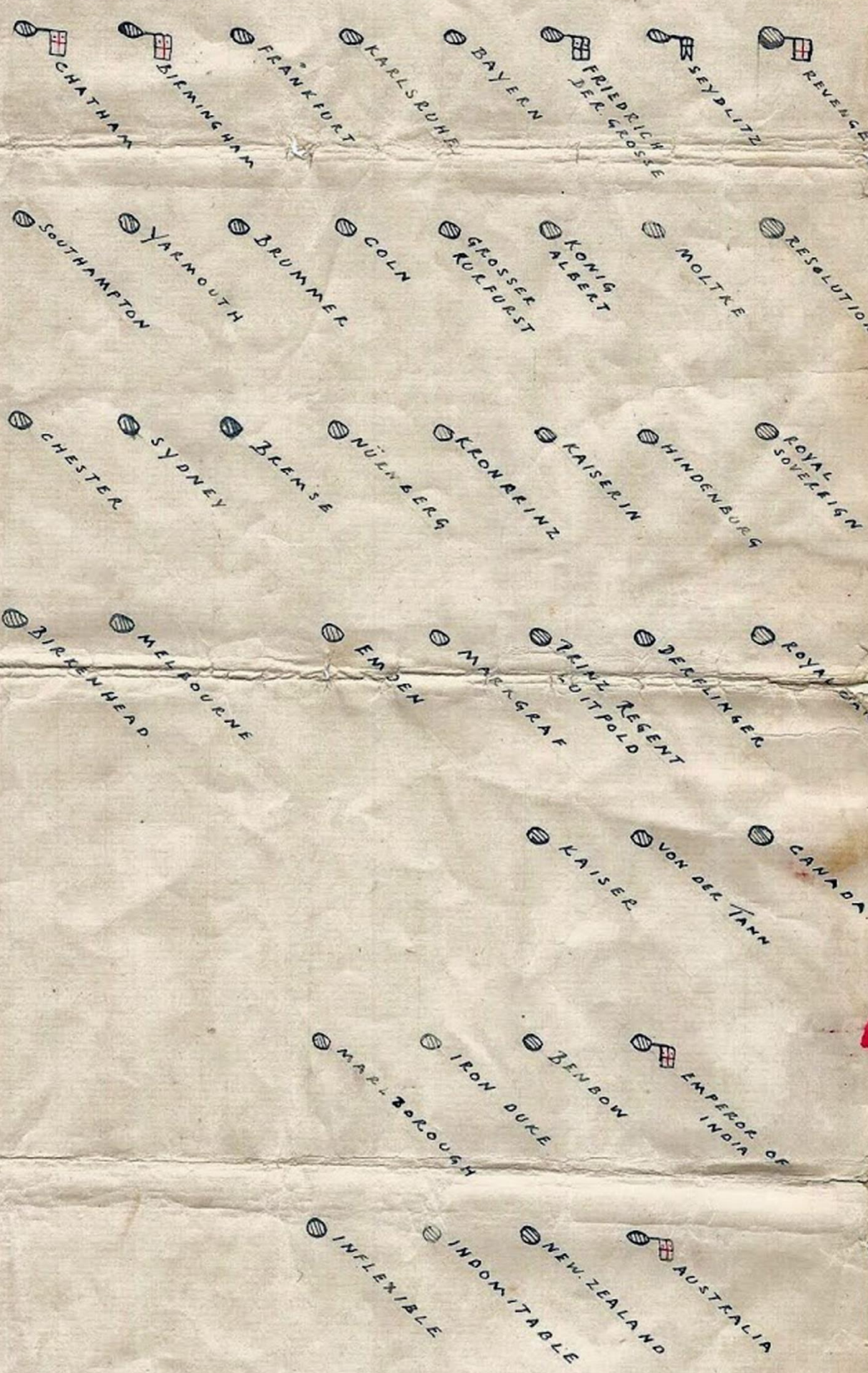
NOTE: - The procedure outlined in (X) is desirable if long signals are involved.

(K) Trawlers anchored under the lee of Inchkeith are to keep a look-out on Inchkeith Signal Station.

(6) General

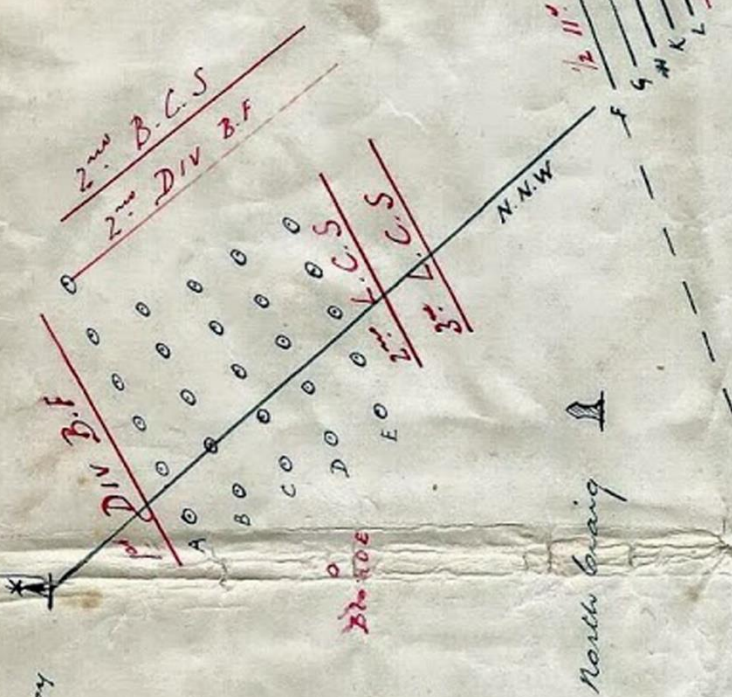
In the event of bad weather, the trawlers employed on patrol duties may be required to transport the searching parties mentioned in paragraph 3(D), in which case special instructions will be issued.

C. E. Madden
Admiral



PLAN OF ANCHORAGE

Distance between lines F.G.H.K & L = 500 Yds
Berth 300 yards apart



Lines A & B: - German Sailer
Cruiser, Battleships & Light Cru
Lines 7 to 1: - German Destroyer
down to each line



Distributions

Back hauler	1 copy
Commander-in-chief, Coast of Scotland	2 "
Extended service officer, Incheith	1 "
Senior naval officer, Granton	1 "
Commanding Officer H.M.S. Revenge	3 "
Commanding Officer H.M.S. Blonde	1 "
Commodore (F)	6 "
Rear Admiral commanding 2 nd Battle Cruiser Squadron	1 "
Rear Admiral commanding 2 nd Light Cruiser Squadron	1 "
Rear Admiral commanding 3 rd Light Cruiser Squadron	1 "
Commander-in-chief, Grand Fleet	1 "
Rear Admiral, First Battle Squadron	1 "



Distribution

Each Trawler	1 Copy
Commander-in-Chief, Coast of Scotland	2 "
Extended Defence Officer, Inchkeith	1 "
Senior Naval Officer, Granton	1 "
Commanding Officer H.M.S. Revenge	3 "
Commanding Officer H.M.S. Blonde	1 "
Commodore (F)	6 "
Rear Admiral Commanding 2 nd Battle Cruiser Squadron	1 "
Rear Admiral Commanding 2 nd Light Cruiser Squadron	1 "
Rear Admiral Commanding 3 rd Light Cruiser Squadron	1 "
Commander-in-Chief, Grand Fleet	1 "
Rear Admiral, First Battle Squadron	1 "

